

**OBERLIN RESIDENCE**

**ARCHITECT**

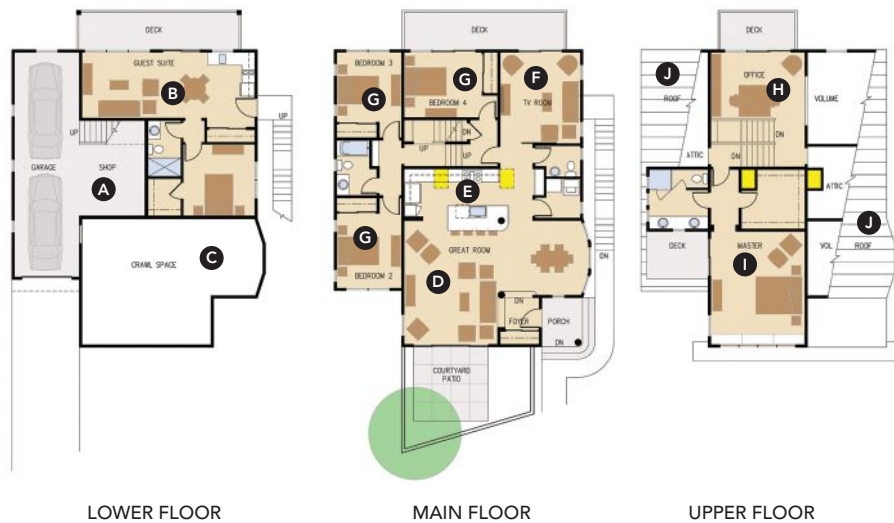
EDI International  
 Richard Handlen, AIA,  
 LEED AP  
 richard.handlen@  
 edi-international.com  
 415.362.2880

**PLAN SIZE**

Width: 40 feet  
 Depth: 48 feet  
 Living area: 3,210 sf



**A** down-to-the-studs remodel of a 1920s Mission revival home, the downhill side of the split-level plan houses a tandem garage with two bedrooms above. On the uphill side were a number of small rooms including the kitchen, dining room, laundry, and two bedrooms, plus an oversize double-height living room. A stairway leads up to the enclosed roof deck at the home's rear, near the added master suite above the original living room.



- A** Existing tandem garage with the addition of a shop/storage area excavated out of the adjacent crawlspace
- B** Rear crawlspace previously used for storage off the garage; the 12-foot-high space is now a guest suite with a bedroom and private exterior access
- C** Existing low crawlspace unchanged
- D** Kitchen has been moved to the rear of the existing living room and the space opened up to include the dining room in one great room. High ceilings in the living area and volume in the dining area add excitement
- E** The kitchen has two skylight shafts bringing light to the rear of the space and balancing the light from high glass on the front elevation

- F** An existing bedroom was expanded to become the kids' TV and playroom opening out to a new rear balcony
- G** Three existing bedrooms are updated with new finishes and expanded closets
- H** The opening from the adult retreat that overlooks the TV room/kids' playroom can be closed off to control sound and provide additional privacy
- I** New master suite has a walk-in closet, a bathroom with glass shower and toilet surrounds, and captures views across the bay to the Golden Gate Bridge
- J** The standing-seam roof slopes up and arches over the new upper floor to fit within the zoning envelope; the low roof covers attic storage along either side of the house