

[HOUSE REVIEW]

MAR VISTA HOUSE

ARCHITECT

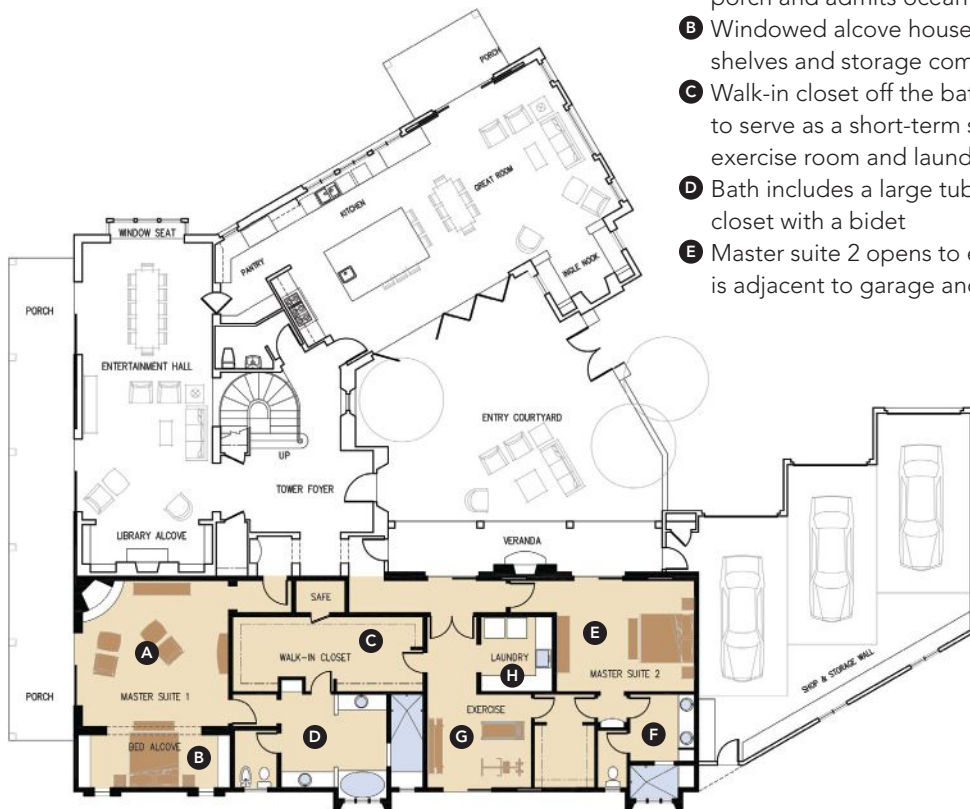
Richard Handlen, AIA,  
LEED AP  
EDI International  
richard.handlen@  
edi-international.com  
415.362.2880

PLAN SIZE

Width: 52 feet  
Depth: 72 feet, 4 inches  
Total living area: 5,000 sf



Sited on an oddly shaped lot, this custom home was built for a couple with radically different schedules. To ensure uninterrupted sleep, a second master suite was included. The two-room design accommodates the early and the late riser and gives a chance to escape snoring or illness. The second suite could also serve guests and offers a potential living space for an in-home caretaker in the future. The second floor houses three additional bedrooms overlooking the entry courtyard.



- Ⓐ Main master suite is shielded from the foyer by two vestibules. There's a corner fireplace and a pocket slider that opens to a porch and admits ocean breezes
- Ⓑ Windowed alcove houses the bed and is lined with bookshelves and storage compartments on both sides
- Ⓒ Walk-in closet off the bath has a concealed safe large enough to serve as a short-term safe room. The closet opens to the exercise room and laundry
- Ⓓ Bath includes a large tub; oversize, doorless shower; and water closet with a bidet
- Ⓔ Master suite 2 opens to entry courtyard via pocket slider. Suite is adjacent to garage and convenient for working partner
- Ⓕ Second master bath is more basic but has an oversize shower with a window wall
- Ⓖ The two master suites have access to the exercise room via walk-in-closets. A glass pocket door opens the space to side-yard exercise options. The room also takes advantage of cross breezes when it's open to the entry court
- Ⓗ Laundry is convenient to both suites and the exercise room. Second-floor laundry is handled on the upper level