

[HOUSE REVIEW]

CASA TRABAJAR

ARCHITECT

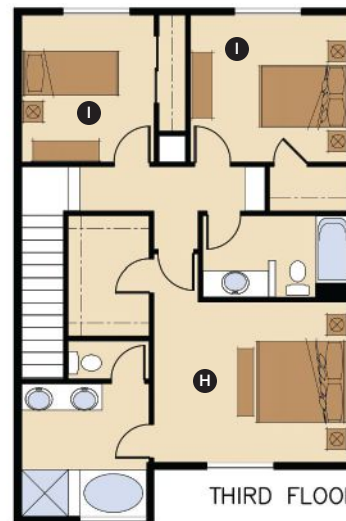
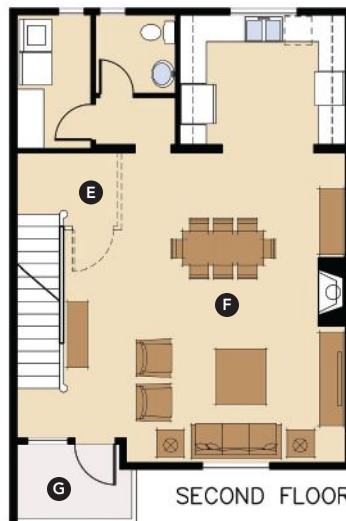
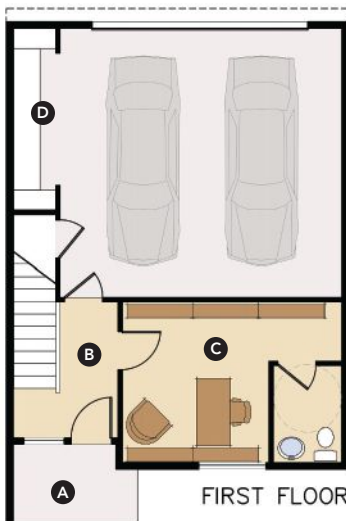
Richard Handlen, AIA,
LEED AP
EDI International
richard.handlen@edi-
international.com
edi-international.com
415.362.2880

PLAN SIZE

Width: 25 feet
Depth: 34 feet
Living area: 2,000 sf



This three-story home could stand alone or be grouped with others to create a row of townhouses. The first floor has a garage and an office space with living on the upper two floors. The home was originally designed to occupy underutilized spaces along the perimeter of a mall parking lot. The front doors face the public street while the rear-load garages open to the parking lot. The row of units helps to shield the parking lot from the surrounding neighborhood. The design also works as the public face of multifamily developments in which live/work units may make sense.



- A Front porch facing the street
- B A common entry for clients or residents with direct access from the garage
- C Work space with an accessible bathroom

- D Garage alcove for a workshop or storage area
- E Optional door creates privacy between residence and common first-floor entry
- F Large great room

- G Private deck
- H Master suite
- I Secondary bedrooms